

Little Giant®

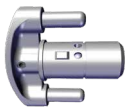
Ladder Systems

HINGE LOCK REPLACEMENT

READ THESE INSTRUCTIONS COMPLETELY BEFORE YOU START. IF YOU DON'T UNDERSTAND THESE INSTRUCTIONS, PLEASE CALL 800-453-1192 FOR ASSISTANCE

1. Failure to comply with all instructions may result in serious injury.
2. Make sure this kit is compatible with your ladder. Before installing this kit, identify all kit components. If any components are missing, damaged or if you have any questions concerning the use of this kit on Little Giant Ladder Systems® products, please contact our Customer Experience Team at 800-453-1192. Do not substitute any components.
3. Inspect the ladder before installing this kit. Repair or replace any damaged or missing parts before using the ladder. Use only Little Giant Ladder Systems® replacement parts. If you are unable to repair it, discard the ladder.

COMPONENTS



HINGE LOCK [1]



LARGE SNAP RING [1]

TOOLS

SNAP RING PLIERS



CHISEL

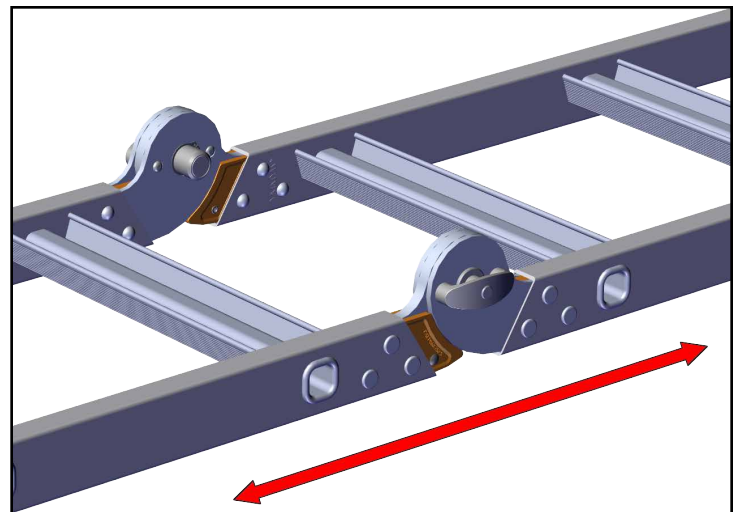
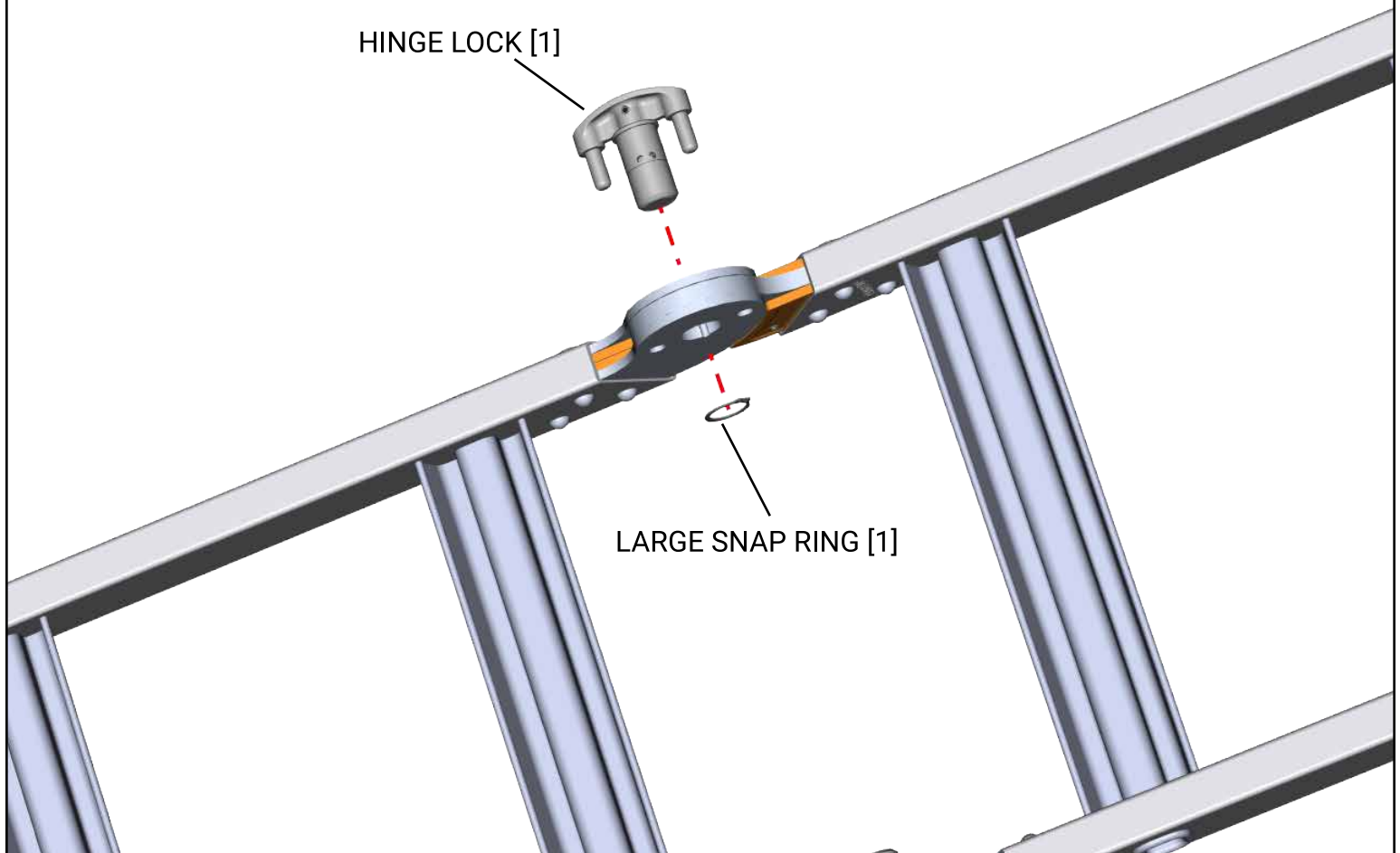


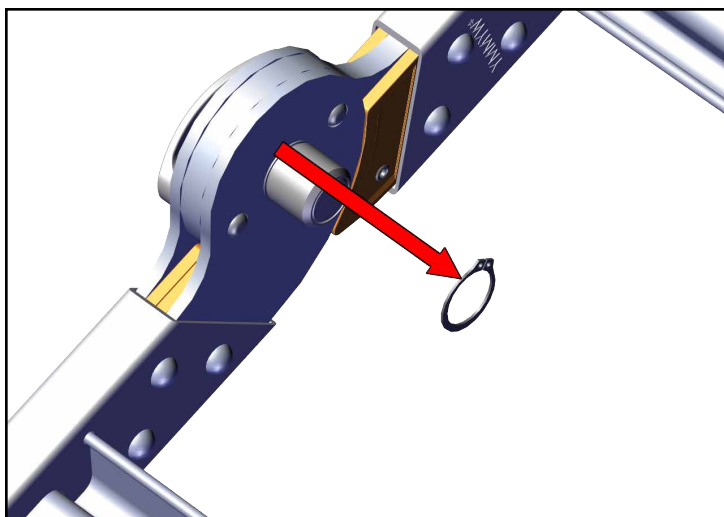
HAMMER



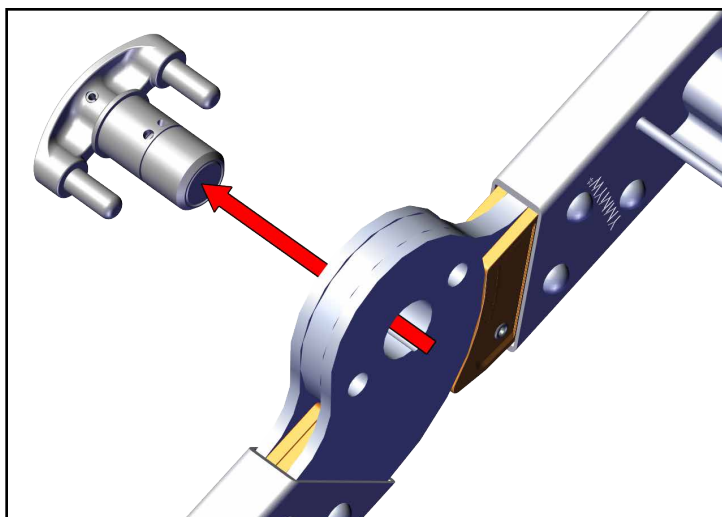
NOTE: IF ANY OTHER PART OF THE LADDER IS DAMAGED BEFORE OR during THE PROCESS OF INSTALLING AND/OR REPAIRING, Please contact our customer experience team for assistance at 800-453-1192.
DO NOT USE A DAMAGED LADDER!

BREAKDOWN

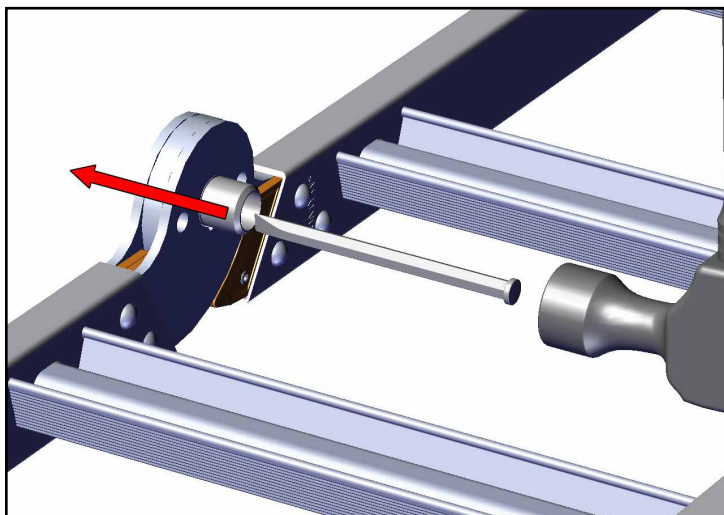




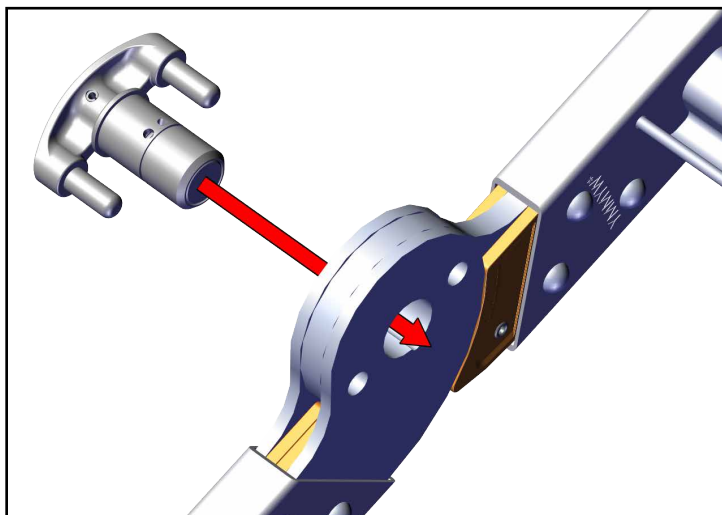
3. Use snap ring pliers to remove the snap ring. Discard the removed snap ring



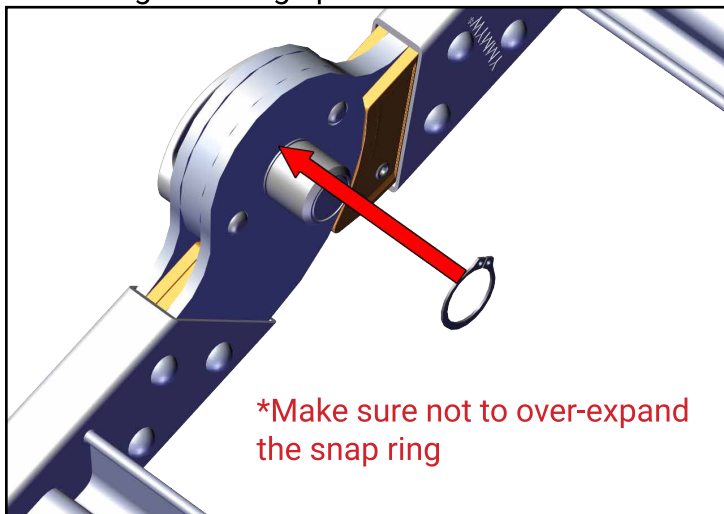
4. Pull the existing hinge lock from the hinge plates, and discard.



5. If the barrel of the hinge lock remains in the hinge plates, hit the corner of the barrel with a hammer and chisel to remove. Take care not to damage the hinge plate.



6. Keeping the notch in the 4 hinge plates aligned, insert the new hinge lock with the bump on the hinge lock barrel inside the notch.



7. Use snap ring pliers to install the large snap ring by placing it in the groove of the barrel, making sure it is fully seated around the groove of the barrel.



8. Re-install the outer assemblies onto the inner assembly. Make sure the hinge lock functions properly before returning the ladder to service.